

Instruction Manual

Choose the switable cabinet accrding

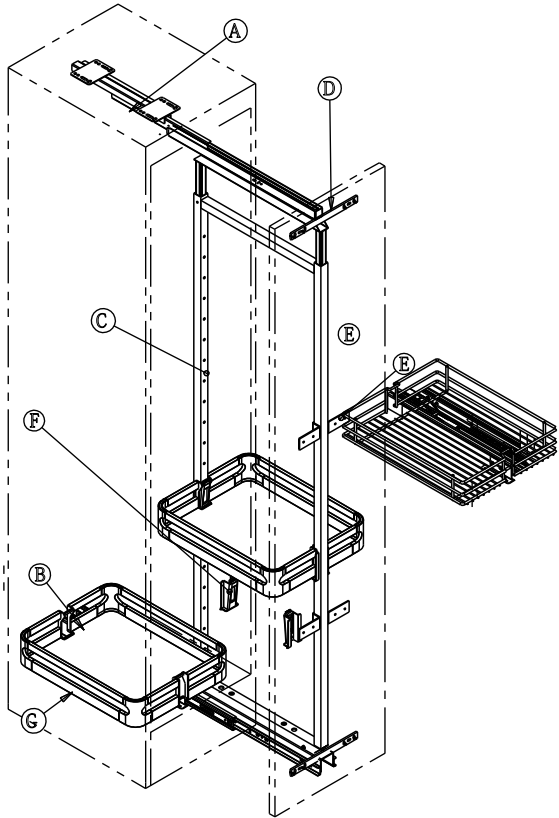
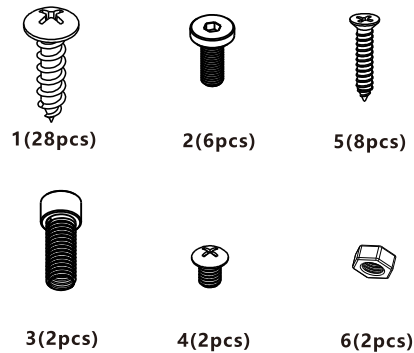
Table of item and cabinet				
Layer	"D"the depth of inside cabinet	"W"the width of inside cabinet	"H"the height of inside cabinet	"B"the minimum inside the cabinet
6+	550	150,200,300,400	1850~2200	115,165,265,365
6	550	150,200,300,400	1700~2000	115,165,265,365
5	550	150,200,300,400	1400~1700	115,165,265,365
4	550	150,200,300,400	1150~1350	115,165,265,365

Listing of parts

- A. top runner
- B. bottom runner
- C. main frame
- D. T-bar
- E. saddle-backed stabilizer
- F. pothook
- G. wire basket

Assembly listing of screw

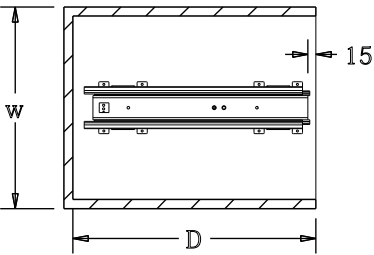
1. ST4*14 pan head wood screw 28PCS:
8PCS use for fixing top runner on the top board of the cabinet.
8PCS use for fixing bottom runner on the bottom board of cabinet.
12PCS use for fixing T-bar to the door board.
8PCS use the saddle-backed stabilizer.
2. 6PCS M6*15 use for connecting and adjusting discreteness of door board.
3. 2PCS M8*20 use for adjusting on the door.
4. 2PCS M6*10 use for adjusting the main frame.



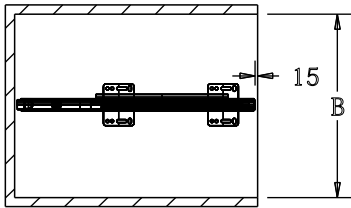
Fixing manua

Fixing step

1、 Fix the bottom runner by using St4*14 pan head wood screw 8PCS to fix up.

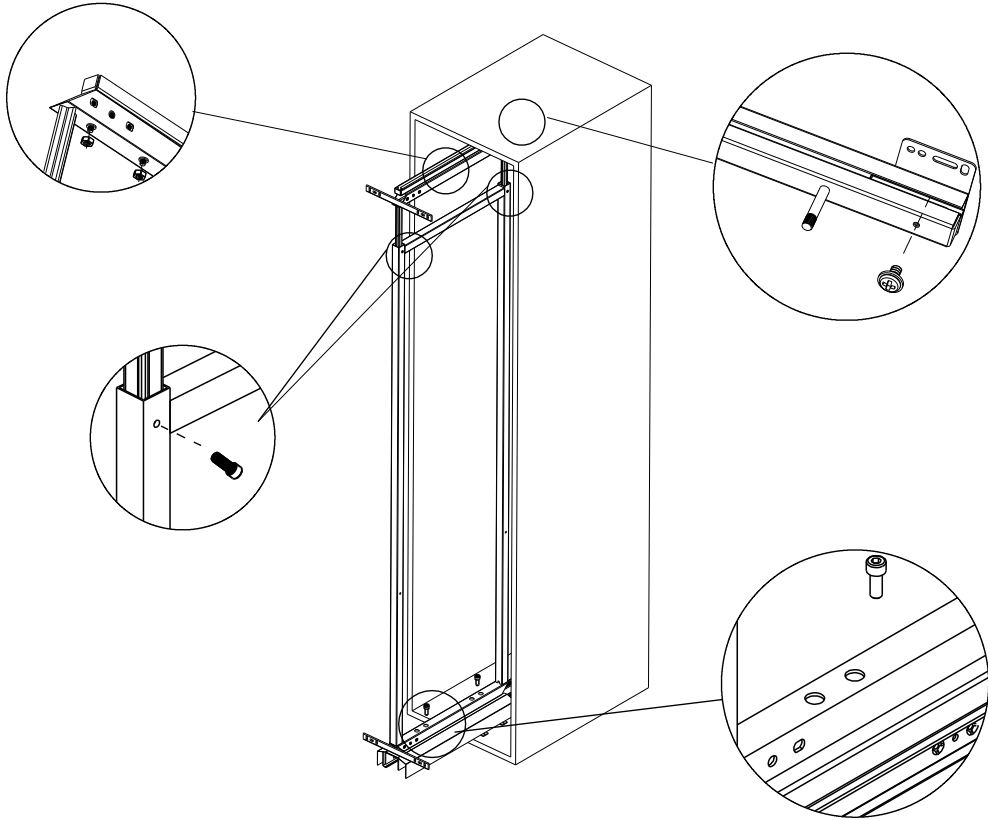


2、 Fixing the top runner by using ST4*14 pan head wood screw 12pcs to fix up

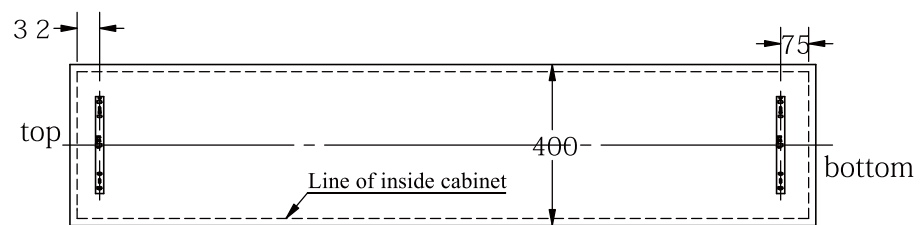


3、 Fix the frame(c) to the bottom runner(B)

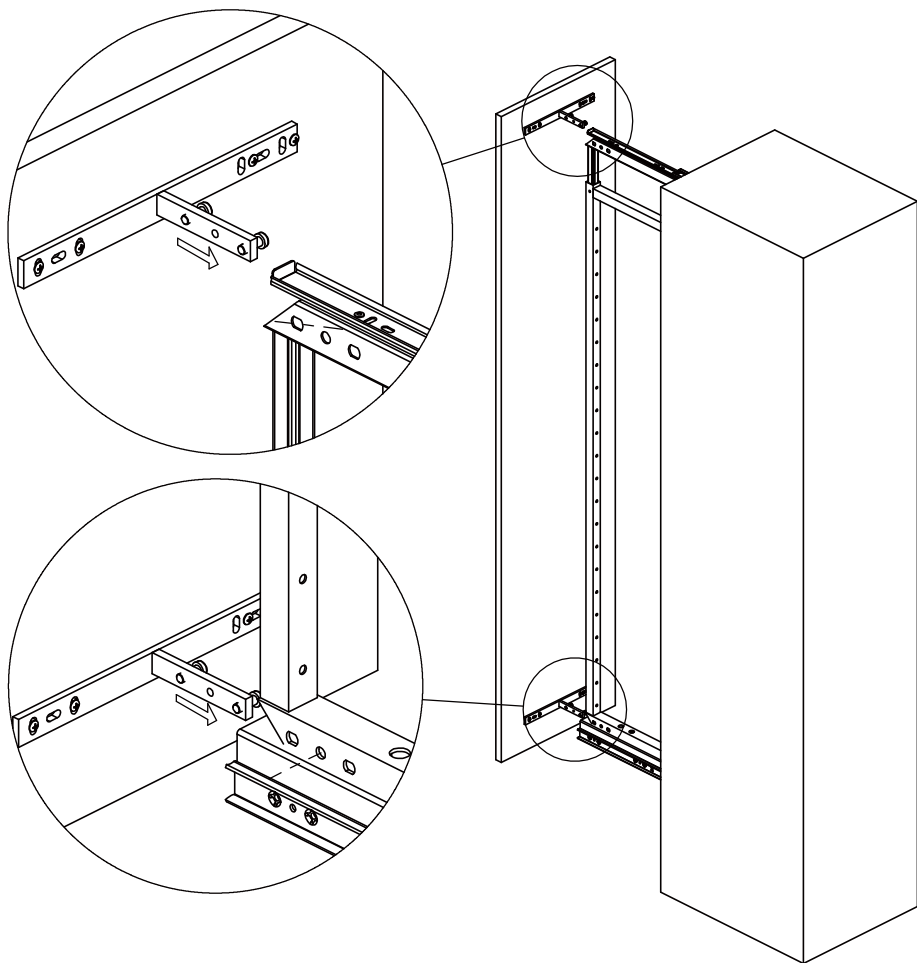
4、 Fixing the frame (c)adjust the frame to the suitable height and fix it up by 2pcs M6*10



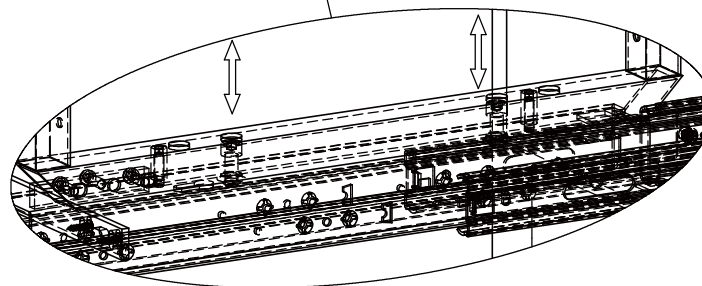
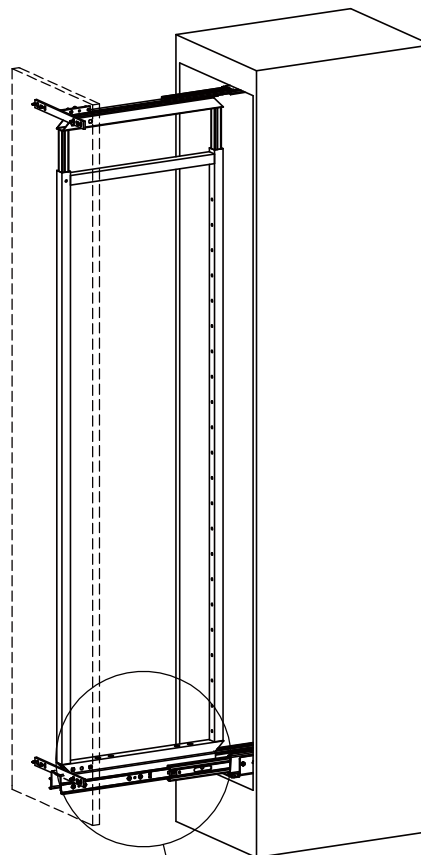
5、 Fixing the T-bar using ST4*14 pan head wood screw
8pcs fixing up,as drawing



8、 Fixing saddle-backed stabilizer(e) to the door by ST4*14 pan head wood screws,as drawing.



6、 Adjust the door by adjust the screw,as drawing;



7、 Put the pothook(F) into the hole of the side of frame,then fix the basket(G),finish all sa drawing;

